

C H I N E S E - C A N T O N E S E

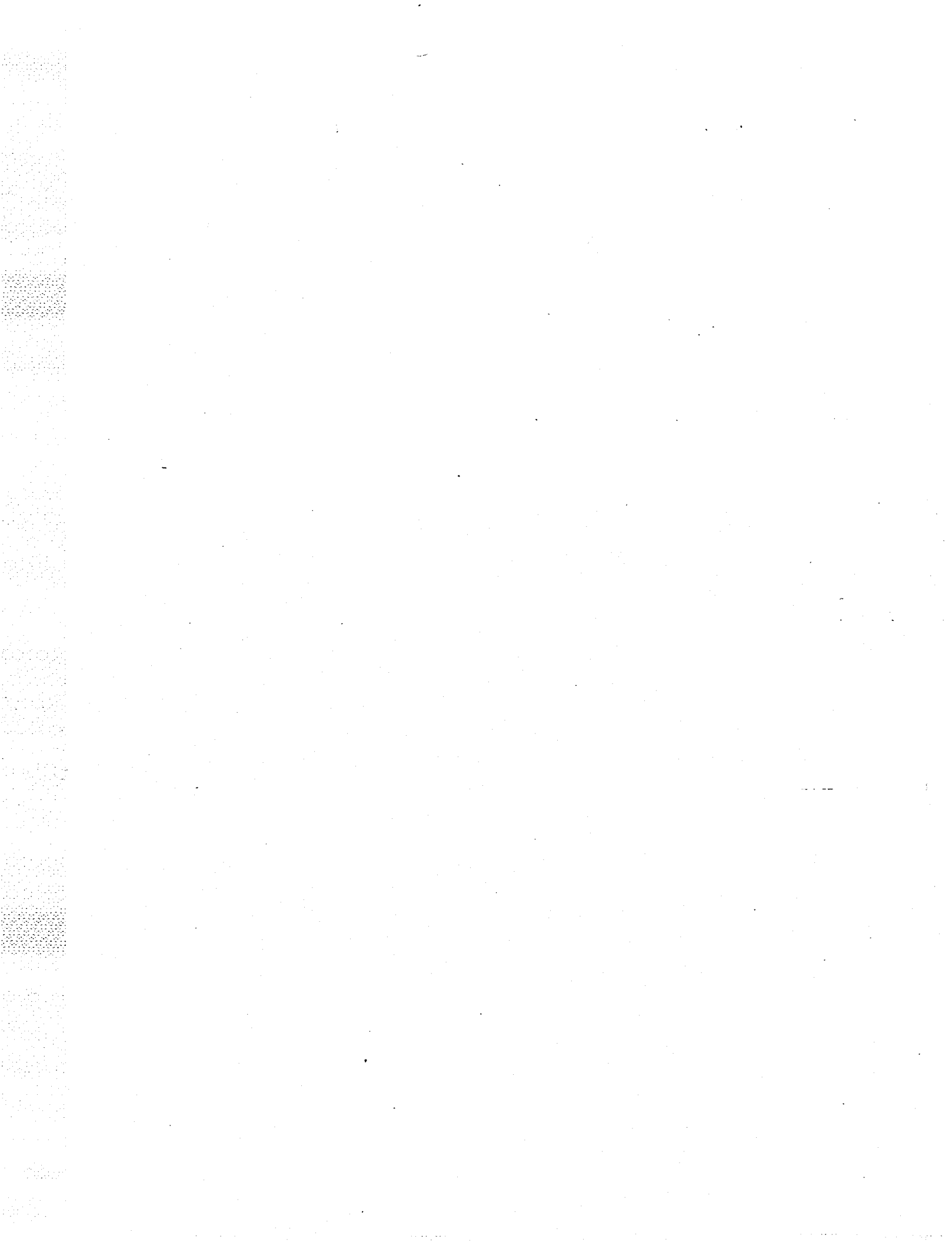
REFRESHER COURSE

LANGUAGE LABORATORY PRACTICE

Units 1-60

March 1966

DEFENSE LANGUAGE INSTITUTE
FOREIGN LANGUAGE CENTER



CHINESE-CANTONESE REFRESHER COURSE

MATERIALS

Printed Material: 1 vol. Introduction
1 vol. Instructional Units 1-30
1 vol. Instructional Units 31-60
1 vol. Instructional Units 61-90
1 vol. Instructional Units 91-120
1 vol. Instructional Units 121-140
1 vol. Instructor's Manual
1 vol. Language Laboratory Practice Units
1-60
1 vol. *Formal Testing Units 1-10
*Formal Testing Units Answer Sheet
Reference Material: 1 vol. Dictionary of Common Chinese-
Cantonese Characters
1 vol. List of Basic Chinese-Cantonese
Military Words
Recorded Material: 140 reels Instructional Units 1-140
60 reels Language Laboratory Practice Units
1-60
10 reels *Formal Testing Units 1-10
Film Material: 1 reel "Free China's Fighting Men"
MF 30-8444
1 reel "Mighty Chinese Armed Forces"
USALS 86
1 reel "Production of Combat Intelligence"
TF 30-1494

*FOR OFFICIAL USE ONLY

CHINESE-CANTONESE REFRESHER COURSE
LANGUAGE LABORATORY PRACTICE UNITS 1-60
PRINTED MATERIALS

This volume contains 60 fifty-minute language laboratory practice units (Language Laboratory Practice Units 1 through 60) designed for individual practice. Each unit contains the following parts:

Aural Comprehension Material. The aim of this part is to maintain and develop the student's ability in aural comprehension. No new element of the language is introduced in this part. The style of this part is in conversational Cantonese Chinese. As this part is for aural comprehension, no printed material is necessary for the student. This part, transcribed in romanization, is for the classroom supervisor or instructor's use only.

Questions. This part is an informal check-up test of the student's mastery of the materials in the unit. No printed material is necessary for the student. The questions and approved answers, transcribed in romanization, are also for the classroom supervisor or instructor's use only.

CHINESE-CANTONESE REFRESHER COURSE
LANGUAGE LABORATORY PRACTICE UNITS 1-60
RECORDED MATERIALS

Instead of printed material, the student is issued an individual reel of pre-recorded tape designed to be used in a tape language course with a minimum of supervision. All tapes are for use on dual channel type magnetic tape recorder and are properly identified. Each tape contains the following parts:

Aural Comprehension Material. This part contains listening and repeat practice.

Questions. This part contains a number of questions. Blank spaces are provided on the tape for the student to record his answer.

For Language Laboratory Practice Units, the following study procedures are to be observed:

1. Listen to the Aural Comprehension Material Listening Practice.
2. Repeat after Aural Comprehension Material Repeat Practice.
3. Answer all questions. Record answers on blank spaces provided between questions.
4. Rewind the tape and play back for self-evaluation.
5. If more time is available, repeat Step 1, 2, 3, and 4, and/or record at the end of the tape a resumé of the Aural Comprehension Material.

CHINESE-CANTONESE REFRESHER COURSE
LANGUAGE LABORATORY PRACTICE UNITS 1-60
CORRELATED MATERIALS

Language Laboratory Practice Units 1 through 60 are to be correlated with 140 fifty-minute instructional units (Instructional Units 1 through 140) designed for classroom instruction. While the Instructional Units may be used independently without the Language Laboratory Practice Units, the Language Laboratory Practice Units are not to be used without systematic correlation with the Instructional Units. Refer to Schedules for systematic correlation.

CHINESE-CANTONESE REFRESHER COURSE
LANGUAGE LABORATORY PRACTICE UNITS 1-60

FILM MATERIALS

Language Laboratory Practice Units 1 through 60 are to be also correlated with 3 training films with Cantonese Chinese sound tracks for the student's viewing and commenting. The three films are as follows:

"Free China's Fighting Men". MF 30-8444. This film pertains to the armed forces of Formosa. The running time is 14 minutes.

"Mighty Chinese Armed Forces". USALS-86. This film pertains to training and strength of National China's Armed Forces. The running time is 22 minutes.

"Production of Combat Intelligence". TF 30-1494. This film pertains to intelligence at work in battle. The running time is 18 minutes.

"Free China's Fighting Men" is to be shown in Hour 138 with Language Laboratory Practice Unit 40, "Mighty Chinese Armed Forces" in Hour 159 with Language Laboratory Practice Unit 46, and "Production of Combat Intelligence" in Hour 201 with Language Laboratory Practice Unit 58.

CHINESE-CANTONESE REFRESHER COURSE
LANGUAGE LABORATORY PRACTICE UNITS 1-60

TESTING MATERIALS

Language Laboratory Practice Units 1 through 60 are to be further correlated with 10 fifty-minute formal testing units (Formal Testing Units 1 through 10) designed to test the student's mastery of materials in the Instructional Units. Refer to Schedule for systematic correlation.

CHINESE-CANTONESE REFRESHER COURSE
LANGUAGE LABORATORY PRACTICE UNITS 1-60

SCHEDULE

1st Wk				2nd Wk				3rd Wk			
M	Hr	1	IU 1	M	Hr	16	IU 11	M	Hr	31	IU 21
		2	IU 2			17	IU 12			32	IU 22
		3	LLPU 1			18	LLPU 6			33	LLPU 10
T	Hr	4	IU 3	T	Hr	19	IU 13	T	Hr	34	IU 23
		5	IU 4			20	IU 14			35	IU 24
		6	LLPU 2			21	FTU 1			36	LLPU 11
W	Hr	7	IU 5	W	Hr	22	IU 15	W	Hr	37	IU 25
		8	IU 6			23	IU 16			38	IU 26
		9	LIPU 3			24	LIPU 7			39	LLPU 12
T	Hr	10	IU 7	T	Hr	25	IU 17	T	Hr	40	IU 27
		11	IU 8			26	IU 18			41	IU 28
		12	LLPU 4			27	LIPU 8			42	FTU 2
F	Hr	13	IU 9	F	Hr	28	IU 19	F	Hr	43	IU 29
		14	IU 10			29	IU 20			44	IU 30
		15	LLPU 5			30	LLPU 9			45	LLPU 13

IU - Instructional Unit

LLPU - Language Laboratory Practice Unit

FTU - Formal Testing Unit

CHINESE-CANTONESE REFRESHER COURSE
LANGUAGE LABORATORY PRACTICE UNITS 1-60

4th Wk				5th Wk				6th Wk			
M	Hr	46	IU 31	M	Hr	61	IU 41	M	Hr	76	IU 51
		47	IU 32			62	IU 42			77	IU 52
		48	LLPU 14			63	FTU 3			78	LLPU 23
T	Hr	49	IU 33	T	Hr	64	IU 43	T	Hr	79	IU 53
		50	IU 34			65	IU 44			80	IU 54
		51	LLPU 15			66	LLPU 19			81	LLPU 24
W	Hr	52	IU 35	W	Hr	67	IU 45	W	Hr	82	IU 55
		53	IU 36			68	IU 46			83	IU 56
		54	LLPU 16			69	LLPU 20			84	FTU 4
T	Hr	55	IU 37	T	Hr	70	IU 47	T	Hr	85	IU 57
		56	IU 38			71	IU 48			86	IU 58
		57	LLPU 17			72	LLPU 21			87	LLPU 25
F	Hr	58	IU 39	F	Hr	73	IU 49	F	Hr	88	IU 59
		59	IU 40			74	IU 50			89	IU 60
		60	LLPU 18			75	LLPU 22			90	LLPU 26

CHINESE-CANTONESE REFRESHER COURSE
LANGUAGE LABORATORY PRACTICE UNITS 1-60

7th Wk				8th Wk				9th Wk			
M	Hr	91	IU 61	M	Hr	106	IU 71	M	Hr	121	IU 81
		92	IU 62			107	IU 72			122	IU 82
		93	LLPU 27			108	LLPU 31			123	LLPU 36
T	Hr	94	IU 63	T	Hr	109	IU 73	T	Hr	124	IU 83
		95	IU 64			110	IU 74			125	IU 84
		96	LLPU 28			111	LLPU 32			126	FTU 6
W	Hr	97	IU 65	W	Hr	112	IU 75	W	Hr	127	IU 85
		98	IU 66			113	IU 76			128	IU 86
		99	LLPU 29			114	LLPU 33			129	LLPU 37
T	Hr	100	IU 67	T	Hr	115	IU 77	T	Hr	130	IU 87
		101	IU 68			116	IU 78			131	IU 88
		102	LLPU 30			117	LLPU 34			132	LLPU 38
F	Hr	103	IU 69	F	Hr	118	IU 79	F	Hr	133	IU 89
		104	IU 70			119	IU 80			134	IU 90
		105	FTU 5			120	LLPU 35			135	LLPU 39

CHINESE-CANTONESE REFRESHER COURSE
LANGUAGE LABORATORY PRACTICE UNITS 1-60

10th Wk				11th Wk				12th Wk			
M	Hr	136	IU 91	M	Hr	151	IU 101	M	Hr	166	IU 111
		137	IU 92			152	IU 102			167	IU 112
		138	LLPU 40			153	LLPU 44			168	FTU 8
T	Hr	139	IU 93	T	Hr	154	IU 103	T	Hr	169	IU 113
		140	IU 94			155	IU 104			170	IU 114
		141	LLPU 41			156	LLPU 45			171	LLPU 49
W	Hr	142	IU 95	W	Hr	157	IU 105	W	Hr	172	IU 115
		143	IU 96			158	IU 106			173	IU 116
		144	LLPU 42			159	LLPU 46			174	LLPU 50
T	Hr	145	IU 97	T	Hr	160	IU 107	T	Hr	175	IU 117
		146	IU 98			161	IU 108			176	IU 118
		147	FTU 7			162	LLPU 47			177	LLPU 51
F	Hr	148	IU 99	F	Hr	163	IU 109	F	Hr	178	IU 119
		149	IU 100			164	IU 110			179	IU 120
		150	LLPU 43			165	LLPU 48			180	LLPU 52

Note - Film "Free China's Fighting Men" MF 30-8444 (14 min)
is to be shown in Hour 138 with LLPU 40.

Film "Mighty Chinese Armed Forces" USALS-86 (22 min)
is to be shown in Hour 159 with LLPU 46.

CHINESE-CANTONESE REFRESHER COURSE
LANGUAGE LABORATORY PRACTICE UNITS 1-60

13th Wk				14th Wk			
M	Hr	181 IU	121	M	Hr	196 IU	131
		182 IU	122			197 IU	132
		183 LLPU	53			198 LLPU	57
T	Hr	184 IU	123	T	Hr	199 IU	133
		185 IU	124			200 IU	134
		186 LLPU	54			201 LLPU	58
W	Hr	187 IU	125	W	Hr	202 IU	135
		188 IU	126			203 IU	136
		189 FTU	9			204 LLPU	59
T	Hr	190 IU	127	T	Hr	205 IU	137
		191 IU	128			206 IU	138
		192 LLPU	55			207 LLPU	60
F	Hr	193 IU	129	F	Hr	208 IU	139
		194 IU	130			209 IU	140
		195 LLPU	56			210 FTU	10

Note - Film "Production of Combat Intelligence" TF 30-1494 (18 min) is to be shown in Hour 201 with LLPU 58.

CHINESE-CANTONESE REFRESHER COURSE
LANGUAGE LABORATORY PRACTICE UNITS 1-60

CONTENTS

Language Laboratory Practice Unit	Page
1	1
2	3
3	5
4	7
5	9
6	11
7	13
8	15
9	17
10	19
11	21
12	23
13	25
14	27
15	29
16	31
17	33
18	35
19	37
20	39
21	41
22	43

CHINESE-CANTONESE REFRESHER COURSE
LANGUAGE LABORATORY PRACTICE UNITS 1-60

Language Laboratory Practice Unit	Page
23	45
24	47
25	49
26	51
27	53
28	55
29	57
30	59
31	61
32	63
33	65
34	67
35	69
36	71
37	73
38	75
39	78
40	80
41	82
42	84
43	86
44	88

CHINESE-CANTONESE REFRESHER COURSE
LANGUAGE LABORATORY PRACTICE UNITS 1-60

Language Laboratory Practice Unit	Page
45	90
46	92
47	94
48	96
49	98
50	100
51	102
52	104
53	106
54	108
55	110
56	112
57	114
58	116
59	119
60	121

LANGUAGE LABORATORY PRACTICE UNIT 1

AURAL COMPREHENSION MATERIAL

Ch'ân Kaaù-Koon: Paâk Chî-On, tsó-shān!

Paâk Sheûng-Wai: Tsó-shān, sin-shaang!

C: K'uī hai pin wai* à?

P: K'uī hai Cheung Sheûng-Sz̄.

C: Cheung Sheûng-Sz̄ hai sz̄-ping m̄-hai à?

P: M̄-hai, k'uī m̄-hai sz̄-ping. K'uī hai kwan-sz̄.

C: K'uī hai kwan-sz̄. Neī hai m̄-hai kwan-sz̄ à?

P: K'uī hai kwan sz̄, taân-hai ngõh m̄-hai kwan-sz̄. Ngõh hai kwan-koon.

C: Òh! Neī hai Paâk Sheûng-Wai. K'uī hai Cheung Sheûng-Sz̄.

P: Mõ-ts'òh là. Neī ne?

C: Ngõh hai sin-shaang.

P: Òh, Ch'ân Sin-Shaang. Ngõh t'üng Cheung Sheûng-Sz̄ to hai hôk-shaang.

C: Neī-teī hai hôk-shaang. Neī-teī yaũ shue, yaũ pat mà?

P: Yaũ à, ngõh-teī yaũ shue, yik-to yaũ pat.

C: Neī-teī yaũ shue, yaũ pat. Taân-hai yaũ mõ pô* ne?

P: Ngõh yaũ shue, yaũ pat, yik yaũ pô*. Cheung Sheûng-Sz̄ yik-to yaũ shue, yaũ pat, yaũ pô*.

C: Kóm ā! Neī-teī yaũ chí mõ à?

P: Yaũ a, ngõh-teī m̄-chí yaũ shue, yaũ pat, yaũ pô*, i-ch'é yaũ chí t'im pòh.

C: M̄-koi, m̄-koi. Tsoi-kìn, tsoi-kìn!

P: M̄-shai-m̄ koi. Tsoi-kìn, Ch'ân Sin-shaang.

LANGUAGE LABORATORY PRACTICE UNIT 1

QUESTIONS AND ANSWERS

- Q. Paâk-Chì-On haî kwan-koon m̄-haî à?
- A. Haî, Paâk-Chì-On haî kwan-koon.
- Q. Paâk-Chì-On haî m̄-haî sin-shaang ne?
- A. M̄-haî, Paâk-Chì-On m̄-haî sin-shaang.
- Q. Paâk-Chì-On m̄-haî sin-shaang. K'uĩ haî mi-yě ne?
- A. Paâk-Chì-On m̄-haî sin-shaang. K'uĩ haî hôk-shaang.
- Q. Paâk-Chì-On haî hôk-shaang. Cheung Sheûng-Sz haî m̄-haî hôk-shaang ne?
- A. Paâk-Chì-On haî hôk-shaang. Cheung Sheûng-Sz yîk-to haî hôk-shaang.
- Q. Paâk-Chì-On t'ûng Cheung Sheûng-Sz to haî hôk-shaang. Ch'ân Sin-Shaang haî m̄-haî hôk-shaang à?
- A. Paâk-Chì-On t'ûng Cheung Sheûng-Sz to haî hôk-shaang, taân-haî Ch'ân Sin-Shaang m̄-haî hôk-shaang.
- Q. Ch'ân Sin-Shaang haî mi-yě à?
- A. K'uĩ haî sin-shaang. K'uĩ haî Ch'ân Kaaù-Koon.
- Q. Hôk-shaang yaũ mǒ shue t'ûng pat à?
- A. Yaũ a, hôk-shaang yaũ shue yîk-to yaũ pat.
- Q. Paâk Sheûng-Wai t'ûng Cheung Sheûng-Sz yaũ shue, yaũ pat mà?
- A. Paâk Sheûng-Wai t'ûng Cheung Sheûng-Sz yaũ shue, yîk-to yaũ pat.
- Q. Hôk-shaang yaũ chí, yaũ pô* mà?
- A. Yaũ, hôk-shaang yaũ chí yîk-to yaũ pô*.
- Q. Paâk Sheûng-Wai t'ûng Cheung Sheûng-Sz haî hôk-shaang. K'uĩ-tei yaũ pô* yaũ chí mà?
- A. Paâk Sheûng-Wai t'ûng Cheung Sheûng-Sz haî hôk-shaang. K'uĩ-tei m̄-chí yaũ shue, yaũ pat, i-ch'é yaũ pô*, yaũ chí t'im pòh.

LANGUAGE LABORATORY PRACTICE UNIT 2

AURAL COMPREHENSION MATERIAL

Paâk Sheûng-Wai: Cheung Sheûng-Sz, fong hok lâ?

Cheung Sheûng-Sz: Hai à. K'ui hai pin-wai* à?

P: K'ui hai Ch'an Sin-Shaang.

C: Uên-loi k'ui hai Ch'an Sin-Shaang. K'ui hai m-hai hai hok-haaü tsô kaaü-koon à?

P: Mõ-ts'òh là. Neï shik m-shik Chung-Mân à? Ooi kóng Kwóng-Tung wâ* mã?

C: Ngõh m-shik Chung-Mân, yik-to m-ooi kóng Kwóng-Tung wâ*.

P: Kóm, neï shik pin chúng wâ* à?

C: Ngõh chí shik Ying-Mân, Faat-Mân, Ngõh-Mân, Tak-Mân.

P: Kóm, neï hai hok-haaü hok pin chúng wâ* à?

C: Ngõh hai hok-haaü hok Chung-Kwòk wâ*. Ngõh hok kóng Kwóng-Tung wâ*, hok sé Chung-Mân tsz, hok tük Chung-Mân shue, hok faan-yik Chung-Mân t'ung Ying-Mân.

P: Neï T'aaì-T'aaì* shik m-shik Chung-Mân à?

C: K'ui m-chí shik Chung-Mân, i-ch'é shik Meï-Kwòk wâ*, Tak-Kwòk wâ*, Faat-Kwòk wâ*, Ngõh-Kwòk wâ*t'im pòh.

P: Kóm a. Neï t'ung neï T'aaì-T'aaì* hai pin shue yân à?

C: Ngõh hai Meï-Kwòk Ka-Shaáng yân. Ngõh T'aaì-T'aaì* hai Meï-Kwòk Chung-Kwòk yân.

P: Uên-loi hai kóm, m-kwaaì-tak neï iù hok Chung-Mân la?

C: Hai à. Kóm, shóh-í ngõh iù hok Chung-Mân la mà!

P: Neï t'aaì-t'aaì* t'ung sai-man-tsaí hai pin shue à?

C: Ngõh t'aaì-t'aaì*, Mã-Lei; k'ui hai ch'ue-fong* shue chue faân. A-tsaí hai haak-t'eng shue t'ai shue. A-nui* hai sai-shan-fong* shue. Ngõh iù hui là.

P: Neï hui shik faân là?

C: Ngõh hui shue-fong* wan-tsaáp-hã kung-fòh, in-chi-haü hui faân-t'eng shue shik faân.

P: Tsoi-kìn, tsoi-kìn.

LANGUAGE LABORATORY PRACTICE UNIT 2

QUESTIONS AND ANSWERS

- Q. Cheung Sheûng-Sz hai m-hai hôk-shaang à?
- A. Hai là. K'ui hai hôk-shaang.
- Q. Cheung Sheûng-Sz shik m-shik Chung-Mân à? K'ui ooï m-ooï kóng Kwóng-Tung wâ* à?
- A. K'ui m-shik Chung-Mân. K'ui m-ooï kóng Kwóng-Tung wâ*.
- Q. Cheung Sheûng-Sz hai hôk-haaû hôk pin chung wâ* à?
- A. K'ui hai hôk-haaû hôk Chung-Mân, hôk kóng Kwóng-Tung wâ*.
- Q. Cheung Sheûng-Sz yaũ mō t'aaï-t'aaï* à?
- A. Yaũ, k'ui yaũ t'aaï-t'aaï*.
- Q. Mã-Lei hai pin-wai* à?
- A. Mã-Lei hai Cheung T'aaï-T'aaï*.
- Q. Mã-Lei shik m-shik Chung-Mân à?
- A. Mã-Lei m-chí shik Chung-Mân, i-ch'é shik Ying-Mân, Faat-Mân, Ngoh-Mân t'im.
- Q. Mã-Lei yaũ sai-man-tsaí mà?
- A. Yaũ à, k'ui yaũ tsaí, yik-to yaũ nuĩ*.
- Q. A-tsaí à-nuĩ* hai pin shuè à? K'ui-tei tsô mi-yě à?
- A. A-tsaí hai haak-t'eng shuè t'ai shue.
A-nuĩ* hai sai-shan-fōng* shuè.
- Q. Cheung Sheûng-Sz fōng hôk. K'ui hui shue-fōng* tsô miyě à?
- A. K'ui fōng hôk. K'ui hui shue-fōng* wan-tsaâp kung-fòh.
- Q. K'ui wan-tsaâp kung-fòh, in-chi-haũ tsô mi-yě à?
- A. K'ui wan-tsaâp kung-fòh, in-chi-haũ shik faân.

LANGUAGE LABORATORY PRACTICE UNIT 3

AURAL COMPREHENSION MATERIAL

Cheung T'aaì-T'aaì*: À tsai, shik faân là. Pā-pa hai shue-fōng*
mā?

À-Tsai: Mā-ma, neī chue-shūk faân là. Táng ngōh huì kiù séng pā-
pa shik faân là!

T'aaì-T'aaì*: Pā-pa fàn-cheūk kaaù ā? M! M-kán-iù là, neī faai
ti huì kiù k'ui heī shan shik faân là!

À-Nuī*: À-koh huì kiù pā-pa là. Mā-ma, ngōh pong neī paaí t'oi*,
hó m-hó à?

T'aaì-T'aaì*: Hó à. Neī ning ti to, ch'a, oón, tìp*, faai-tsí
huì faân-téng. Siú-sam ti chí tak à.

À-Nuī*: Tak là. Ngōh ooí tsô, taân-hai ngōh iù kōh-koh pong
ngōh ning faai-tsí, oón, tìp* chí tak pòh.

À-Tsai: Pā-pa heī shan là. K'ui wā, k'ui huì sai-shan-fōng* sin,
in-chi-hau chí ch'ut lai faân-t'éng shik faân wōh!

T'aaì-T'aaì*: À-tsai, neī faai ti huì pong-hā mooí-mooí* paaí
t'oi*. Neī cha ti to, ch'a, oón, tìp*, ch'i-kang huì faân-
t'éng, paaí hai t'oi* shuè là. Siú-sam à!

À-Tsai: M-shai taam-sam, mā-ma. Ngōh t'ung mooí-mooí* to shik
tsô ni ti yē.

Cheung Sheung-Sz: Mā-Lei, chue-shūk faân là! Shai m-shai ngōh
pong neī hoi faân à?

T'aaì-T'aaì*: À-Chim à! Neī ying-koi shik faân, wan-tsaâp kung-
fòh sin, in-chi-hau fàn-kaaù chí tak kà. Neī m-túk shue,
m-wan-tsaâp kung-fòh, m-kwaaí-tak neī m-shik Chung-Mān là.

Sheung-Sz: M-koi neī m-hó kóng là. Ngōh séung shik-uēn faân
chí huì wan-tsaâp kung-fòh.

À-tsai: Pā-pa, mā-ma. Paaí-hó t'oi* là.

T'aaì-T'aaì*: Ā! Kóm ngōh hoi faân là.

Sheung-Sz: À-nuī* hai pin shuè à?

T'aaì-T'aaì: À-nuī* hai faân-t'éng shuè. Ngōh-tei huì shik
faân là.

LANGUAGE LABORATORY PRACTICE UNIT 3

QUESTIONS AND ANSWERS

- Q. Pin-wai* hai A-Chim à?
- A: Cheung Sheung-Sz hai A-Chim.
- Q. A-Chim fong hok. K'ui ying-koi tsô mi-yê sin, in-chi-hau chi fan kaaù à?
- A: A-Chim fong hok. K'ui ying-koi shik faan, wan-tsaap kung-fon sin, in-chi-hau hoh-i fan kaaù.
- Q. Taan-hai Cheung Sheung-Sz hui shue-fong* tsô mi-yê sin, in-chi-hau chi shik faan à?
- A. Taan-hai Cheung Sheung-Sz hui shue-fong* fan kaaù sin, in-hau chi shik faan.
- Q. A-tsaí hui shue-fong* kiú A-Chim heí shan tsô mi-yê à?
- A. A-tsaí hui shue-fong* kiú séng A-Chim shik faan.
- Q. Mã-Lei ooi m-ooi chue faan à?
- A. K'ui ooi chue faan.
- Q. K'ui-tei yung oon, tip*, faai-tsú, ch'i-kang tsô mi-yê à?
- A. K'ui-tei yung oon, tip*, faai-tsú, ch'i-kang lai shik faan.
- Q. A-nui* pong ma-ma tsô mi-yê à?
- A. A-nui* pong ma-ma paai t'oi*.
- Q. Pin-wai* pong a-nui* paai t'oi* à?
- A. A-tsaí pong a-nui* paai t'oi*.
- Q. Mã-Lei taam-sam mi-yê à?
- A. K'ui taam-sam a-tsaí t'ung a-nui* paai t'oi* m-siu-sam.
- Q. A-tsaí t'ung a-nui* pong pin-wai* t'aaí-t'aaí* paai t'oi* à?
- A. A-tsaí t'ung a-nui* pong Cheung T'aaí-T'aaí* paai t'oi*.
- Q. A-Chim pong-m-pong Mã-Lei tsô yê à? A-Chim hai shue-fong* tsô mi-yê à?
- A. A-Chim m-pong Mã-Lei tsô yê. K'ui hai shue-fong* fan kaaù.

LANGUAGE LABORATORY PRACTICE UNIT 4

AURAL COMPREHENSION MATERIAL

Cheung T'aaì-T'aaì*: Hoi-hó faân là. Ngõh-teî shîk faân là.

Cheung Sheûng-Sz: Mã-Lei, ti sùng ching-tak m̄-chí hó-t'ai, i-ch'e yaũ heung yaũ t'im. T'ai-hã tsaũ seung shîk là.

À-Tsai: Pā-pa, neĩ i-ka chì chi-tò ā! Mã-ma chué T'ōng-ts'aan t'ūng sai-ts'aan to hó hó shaũ-shai kà. Yaũ-k'eĩ-shî Uêt ts'oi. Hó sha-tak kà.

T'aaì-T'aaì*: À-tsai, m̄-hó kóng kòm toh là. Neĩ t'ō-ngõh tsaũ faai ti shîk la.

À-Nuĩ*: Mã-ma, chũng yaũ mō ts'oi-t'ōng à. Ngõh keng-hòt à.

À-Tsai: Ngõh to keng-hòt à, mã-ma.

T'aaì-T'aaì*: Chũng yaũ hó toh ts'oi-t'ong. Ngõh huì ning ti lai. M̄-koi neĩ-teî táng-hã.

Sheûng-Sz: À-tsai, à-nuĩ*, m̄-hó yám kòm toh t'ong à, tui neĩ mō yik kà.

À-Tsai: Ngõh keng-hòt, ti ts'oi-t'ong yaũ kòm hó-yám, m̄-yám tím-tak ne?

T'aaì-T'aaì*: Ts'oi-t'ong lai là. À-Chim, neĩ huì pin shuè à?

Sheûng-Sz: Ngõh shîk-paáu là. Ngõh huì shue-fōng* wan-tsaap kung-fòh. Ti Chung-Mān yaũ sham yaũ naãn, chan-hai m̄-yūng-î hók.

T'aaì-T'aaì*: M̄-shai kòm pai-ai, hók mi-yē to kaan-naãn. K'au-k'eĩ neĩ háng hók tsaũ ooi shing-kung kà là.

Sheûng-Sz: Kóng tsaũ yūng-î che, taan-hai tsô tsaũ naãn là. Kwóng-Tung wâ* kòm p'ó-p'in, kòm chũng-iù. Ngõh to chì-tò kè. Hók-tó ni chũng wâ* tui tsz-keĩ yaũ yik.

T'aaì-T'aaì*: Kóm, neĩ chì-tò tsaũ hó là.

À-Tsai: Ngõh shîk-paáu là, mã-ma.

À-Nuĩ*: Ngõh to shîk-paáu là.

T'aaì-T'aaì*: Neĩ-teî táng-hã chì huì la. Neĩ-teî iù pong nõh sai oon, tîp* chì tak kà. Sai-uēn oon, tîp*, neĩ-teî tsó ti huì fàn, hó mà?

À-Nuĩ*: Tak là, mã-ma. Neĩ chué faân chué-tak kòm san-foó. Ngõh-teî ying-koi pong neĩ kè. Chũng shai kóng kè*!

LANGUAGE LABORATORY PRACTICE UNIT 4

QUESTIONS AND ANSWERS

- Q. Mǎ-Leī chué mi-yě ts'aan chué tak hó shaú-shai à?
- A. K'uī chué T'ōng ts'aan chué tak hó shaú-shai.
- Q. Mǎ-Leī ooī m̄-ooī chué Uêt ts'oi? Chué-tak hó m̄-hó à?
- A. K'uī ooī chué Uêt ts'oi. K'uī chué Uêt ts'oi chué-tak yaú heung yaú t'im.
- Q. Â-tsaí t'ō-ngôh. K'uī shik mi-yě à?
- A. Â-tsaí t'ō-ngôh. K'uī shik faân.
- Q. Â-tsaí kêng-hòt. K'uī yám mi-yě à?
- A. Â-tsaí kêng-hòt. K'uī yám ts'oi-t'ong.
- Q. Â-Chim shik-uēn faân. K'uī tsô mi-yě à?
- A. Â-Chim shik-uēn faân. K'uī seúng huì shue-fōng* wan-tsaâp kung-fòh.
- Q. Â-Chim wâ Chung-Mān naān m̄-naān à?
- A. K'uī wâ , Chung-Mān hó naān.
- Q. Kwóng-Tung wâ* kòm naān. Â-Chim tím-suèn-hó ne?
- A. Kwóng-Tung wâ* kòm naān. Â-Chim iù háng ti hôk.
- Q. Chung-Mān kòm naān hôk. Tsô mi-yě Â-Chim iù hôk Kwóng-Tung wâ* ne?
- A. Kwóng-Tung wâ* kòm p'ó-p'in, kòm chūng-iù. Hôk-tó ni chūng wâ* tui k'uī tsz-kei yaú yik.
- Q. Â-tsaí, à-nuī* shik-uēn faân. K'uī-tei tsô mi-yě à?
- A. K'uī-tei pong Cheung T'aai-T'aai* sai óon, tîp*.
- Q. Â-tsaí, à-nuī* sai-uēn óon, tîp*. K'uī-tei iù tsó ti tsô mi-yě à?
- A. K'uī-tei sai-uēn óon, tîp*; tsó ti huì fàn kaaù.

LANGUAGE LABORATORY PRACTICE UNIT 5

AURAL COMPREHENSION MATERIAL

À-Tsai: Mā-ma, ngōh t'ūng mooī-mooī* sai-uēn ón tīp* là.
Chūng shai m-shai ngōh pong neī à?

Cheung T'aaī-T'aaī*: M-shai là. Neī-teī sai-uēn ón tīp*, tsaū
tsó ti huī fàn là.

À-Nuī*: Chūng tsó à! Ngōh seúng t'ai-hă shue, in-haū chì fàn
kaaū.

T'aaī-T'aaī*: M-tsó là, t'ing-yât chì t'ai shue là. T'eng mā-
ma wā là. Hó sai-man-tsaī ying-koi tsó ti fàn, tsó ti heī
shan chì tak kà.

Cheung Sheūng-Sz: À-nuī* à-tsaī chūng meī fàn à?

T'aaī-T'aaī*: K'uī-teī i-ka huī fàn là. À-Chim, neī tsô-heī
kung-fòh lâ? Fàn meī à?

Sheūng-Sz: Tsaū tsô-heī là. Ngōh seúng t'ūng neī kóng ti yē
chì fàn.

T'aaī-T'aaī*: À-Chim, neī seúng t'ūng ngōh kóng mi-yē à? Ts'ing
neī kóng la.

Sheūng-Sz: Mā-Leī, neī chi-tò mà? T'ing-yât lai-paaī nǎ, shâp-
ī hô; haū-yât lai-paaī lūk, shâp-saam hô. Kóh yât haī ngōh-
teī kit fan kè keī-nīm yât. Neī keī-tak mà?

T'aaī-T'aaī*: Ngōh keī-tak. Neī tūk shue tūk-tak kòm mōng.
Ngōh chūng i-wai neī m-keī-tak à.

Sheūng-Sz: Kóh yât haī ngōh-teī kit fan keī-nīm yât. Yaū haī
neī kè shaang-yât. Kòm chūng-iú kè yât-tsú, tím ooī m-keī-
tak ne!

T'aaī-T'aaī*: Kóm, ngōh-teī ying-koi ts'éng ti yān-haāk lai ko-
hìng hă, hó mà?

Sheūng-Sz: Tsô chue-yān kè chan-haī naān tsô là. Ts'éng ni kòh,
m-ts'éng kóh kòh yaū m-tak. Ts'éng kóh kòh, m-ts'éng ni-
kòh yaū m-hó. Uē-kwóh yān-haāk t'aaī toh yaū m-hó, tím ne?

T'aaī-T'aaī*: Ts'éng yān-haāk ts'éng-tak t'aaī toh m-haī keī
hó. Pat-uē tsīng haī ts'éng keī kòh hó p'aāng-yaū pā* là.

Sheūng-Sz: Hó à, ngōh tá-suèn tsīng-haī tséng neī kè p'aāng-yaū
Wōng A-Lín, kaāk-leī Leī sheūng-kaaū, Leī T'aaī-T'aaī, t'ūng-
maai keī kòh t'ūng-hòk.

LANGUAGE LABORATORY PRACTICE UNIT 5

QUESTIONS AND ANSWERS

- Q. Pin-kòh wâ, hó kè sai-man-tsaí ying-koi tsó ti fàn, tsó ti heí shan à?
- A. Cheung T'aai-T'aai* wâ, hó kè sai-man-tsaí ying-koi tsó ti fàn, tsó ti heí shan.
- Q. Cheung T'aai-T'aai* kiù à-tsaí, à-nuĩ* tsó ti hui fàn. K'ui-tei yaũ mō hui fàn à?
- A. À-tsaí, à-nuĩ* t'eng Cheung T'aai-T'aai* wâ. K'ui-tei tsó ti hui fàn.
- Q. À-tsaí, à-nuĩ* hai m-hai hó sai-man-tsaí à?
- A. À-tsaí, à-nuĩ* hai hó sai-man-tsaí.
- Q. À-Chim chi m-chi-tò à-tsaí; à-nuĩ* hui fàn kaaù à?
- A. À-Chim chi-tò à-tsaí, à-nuĩ* hui fàn kaaù.
- Q. À-Chim chi-tò haũ-yât hai lai-paaì keí à?
- A. À-Chim chi-tò haũ-yât hai lai-paaì lûk.
- Q. Haũ-yât, lai-paaì lûk hai keí hô à?
- A. Haũ-yât, lai-paaì lûk hai shâp-saam hô.
- Q. Kòh yât hai mi-yě yât-tsú à?
- A. Kòh yât hai k'ui-tei kif fan keí-nim yât, yaũ hai Cheung T'aai-T'aai* kè shaang-yât.
- Q. Kòh yât k'ui-tei seung ts'éng pin keí kòh yân lai ko-hing hã à?
- A. K'ui-tei tá-suèn ts'éng Lei Sheung-Kaaù, Lei T'aai-T'aai*, Wōng Á-Lin, t'ūng maaì keí kòh p'aāng-yaũ.
- Q. Wōng Á-Lin hai pin-kòh kè nuĩ p'aāng-yaũ à?
- A. K'ui hai Cheung T'aai-T'aai* kè nuĩ p'aāng-yaũ.

LANGUAGE LABORATORY PRACTICE UNIT 6

AURAL COMPREHENSION MATERIAL

Cheung T'aaì-T'aaì*: À-Chim, hó yê là. Iù fàn là.

Cheung Sheûng-Szê: Ī-ka kaù-king keí tím-chung à? Ngõh chûng séung wan-tsaâp-hã kung-fòh chì fàn.

T'aaì-T'aaì*: Hó yê là! Ī-ka ĩ-king shâp-î-tím taâp-î là. M̄-koi neĩ faai ti huĩ fàn. T'ing-yât neĩ iù tsó ti heĩ shan faan hôk à!

Sheûng-Szê: Haĩ pòh, t'ing-yât lai-paaì nḡ, yaũ kím-uêt. Mã-Leĩ, m̄-koi neĩ ching-hó ngõh kè chai-fúk, táng ngõh t'ing-yât lai oôn. Naaũ-chung lûk-tím heung. Kóm, ngõh tsaũ m̄-oĩ aân heĩ shan kà là.

T'aaì-T'aaì*: Ngõh ĩ-king ching tîng hó là. À-Chim, ngõh t'ing-yât iù huĩ kaau tîn fai, shuí fai; kaau-uen tîn fai, shuí fai, ngõh yaũ iù huĩ p'ò-t'au* maaĩ yê. Neĩ yaũ m̄ yê maaĩ à?

Sheûng-Szê: Ngõh m̄ mi-yê iù maaĩ. Neĩ t'ing-yât yûng kà ch'e, táng ngõh taâp pa-szê* faan hôk tak là.

T'aaì-T'aaì*: Neĩ chan-haĩ kòh hó cheung-foo là. Neĩ m̄ kà ch'e fong m̄-fong-pîn à?

Sheûng-Szê: M̄-kán-iù. Ngõh tsing haĩ yûng kà ch'e lai faan hôk, taân-haĩ neĩ yaũ kóm toh yê iù tsó, neĩ yûng kà ch'e hó ti. Ngõh kei-foõ m̄-kei-tak tím. Kà ch'e iù oôn yaũ* là!

T'aaì-T'aaì*: Oh. Ngõh t'ing-yât kiù yân oôn yaũ*. M̄-hó kóng kóm toh là. Fàn pâ* là.

Sheûng-Szê: Neĩ huĩ fàn sin la. Ngõh ĩ-ka huĩ ts'aat ngā. Ngõh tsaũ lai là.

LANGUAGE LABORATORY PRACTICE UNIT 6

QUESTIONS AND ANSWERS

- Q. T'ing-yât lai-paaì keí à?
- A. T'ing-yât lai-paaì nǎ.
- Q. Lai-paaì nǎ yaũ mǒ kím-uêt à?
- A. Lai-paaì nǎ yaũ kím-uêt.
- Q. Cheung Sheûng-Sz kiù pin-kòh t'üng k'uĩ ching-hó ti chai-fûk à?
- A. Cheung Sheûng-Sz kiù Cheung T'aaì-T'aaì* t'üng k'uĩ ching-hó ti chai-fûk.
- Q. Tím-kaaí kòm tsó tsaü ching-hó ti chai-fûk à?
- A. T'ing-yât yaũ kím-uêt, Cheung Sheûng-Sz iù tsó ti heí shan, shóh-í iù tsó ti ching-hó ti chai-fûk.
- Q. Cheung Sheûng-Sz t'ing-yât yûng m̄-yûng k'uĩ kà ch'e à?
- A. K'uĩ t'ing-yât m̄-yûng k'uĩ kà ch'e.
- Q. Kóm, Cheung Sheûng-Sz tím faan hôk à?
- A. K'uĩ taáp pa-sz* faan hôk.
- Q. Cheung Sheûng-Sz m̄-yûng kà ch'e. Pin-kòh iù yûng kà ch'e à?
- A. Cheung T'aaì-T'aaì* iù yûng kà ch'e.
- Q. Tím-kaaí Cheung T'aaì-T'aaì* iù yûng kà ch'e à?
- A. T'ing-yât Cheung T'aaì-T'aaì* yaũ hó toh yě iù tsó, shóh-í k'uĩ iù yûng kà ch'e.
- Q. Kà ch'e shái m̄-shái oôn yaũ* à?
- A. Kà ch'e iù oôn yaũ*.
- Q. Pin-kòh ning kà ch'e huì oôn yaũ* à?
- A. Cheung T'aaì-T'aaì ning kà ch'e huì oôn yaũ*.

LANGUAGE LABORATORY PRACTICE UNIT 7

AURAL COMPREHENSION MATERIAL

Cheung T'aaì-T'aaì*: À-Chim, naaû-chung héung là. Neĩ chung m̄-heĩ shan. Tsó-ts'aan ching-hó là.

Cheung Sheûng-Sz̄: Kòm faaì kau chung là! Neĩ maĩ ts'ui-tak ngõh kòm kán-iù là. Ngõh seung fàn toh yat-fan-chung to m̄-tak.

T'aaì-T'aaì*: Neĩ tük shue tük-tak kòm mōng, maãn-maãn to wan-tsaáp tò hó yê chì fàn. Ngõh t'ung-ts'ing neĩ. Pat-kwòh kam-yât ngõh iù yung kà ch'e, neĩ iù taáp pa-sz̄* faan hôk, kei-tak mã? M-haĩ tsaũ taáp m̄-tó kà là.

Sheûng-Sz̄: Haĩ à! Ngõh kei-foō m̄-kei-tak t'im! Ngõh heĩ shan là. Uē-kwòh neĩ m̄-kóng peĩ ngõh t'eng, ngõh tsaũ ooi ch'i tò kà là.

T'aaì-T'aaì*: À-Chim, t'ing-yât ts'éng haak à. Neĩ faan hui hôk-haaũ, kei-tak ts'éng Paak Sheûng-Wai lai shik faan, yám tsaũ à. Ngõh-teĩ kaan uk kòm naãn wán. Chì hó neĩ waak kòh teĩ-t'ò peĩ k'ui t'ai, sé ts'ing-ch'òh ti, ts'eung-sai ti chì hó à.

Sheûng-Sz̄: Hó à, ngõh tsaũ kóm tsô la. Ngõh seung-sùn k'ui shik lô kà là. Uē-kwòh k'ui chung wán m̄-tó ngõh-teĩ kaan uk, ngõh wai-yaũ kiù k'ui tá tân-wâ* peĩ ngõh, táng ngõh hui taaĩ k'ui lai la, hó mã?

T'aaì-T'aaì*: Mō mat mân-t'ai. Pat-kwòh táng k'ui fong-pîn ti che. Pit-iù shĩ, k'ui pat-fōng tá kòh tân-wâ* peĩ ngõh-teĩ a.

Sheûng-Sz̄: Ngõh shik-uên là. Pa-sz̄* tsaũ lai là. Tsoi-kìn!

T'aaì-T'aaì*: Siú-sam à! Tsoi-kìn!

LANGUAGE LABORATORY PRACTICE UNIT 7

QUESTIONS AND ANSWERS

- Q. Naaû-chung heúng, Cheung Sheûng-Sz heí shan meí à?
- A. Cheung Sheûng-Sz chûng meí heí shan.
- Q. Pin-kòh kiù À-Chim heí shan à?
- A. Cheung T'aaì-T'aaì* kiù À-Chim heí shan.
- Q. Kam-yât Cheung Sheûng-Sz tsz-keí shai ch'e faan hôk, hai m-hai à?
- A. M-hai. Cheung Sheûng-Sz m-shai kà ch'e faan hôk.
- Q. Pin-kòh yûng kà ch'e à?
- A. Cheung T'aaì-T'aaì* yûng kà ch'e.
- Q. Kam-yât Cheung Sheûng-Sz tím-yeûng* faan hôk à?
- A. Kam-yât k'uĩ taap pa-sz* faan hôk.
- Q. Cheung T'aaì-T'aaì* keí shí ts'ing haak à?
- A. K'uĩ t'ing-yât ts'ing haak.
- Q. Cheung Sheûng-Sz hai hôk-haaû ts'éng pin-kòh hui k'uĩ uk-k'eí shik faan à?
- A. K'uĩ ts'éng Paak Sheûng-Wai shik ts'aan pin-faan.
- Q. Cheung Sheûng-Sz kaan uk yûng m-yûng-i wán à?
- A. K'uĩ kè uk hó naan wán.
- Q. Kóm, Cheung Sheûng-Sz chì hó waak yat-kòh mi-yě peí Paak Sheûng-Wai ne?
- A. K'uĩ chì hó hai waak yat-kòh tei-t'ò peí Paak Sheûng-Wai là.
- Q. Uē-kwóh Paak Sheûng-Wai chûng wán m-tó Cheung Sheûng-Sz kaan uk, Paak Sheûng-Wai tsaû iù tím-yeûng* tsô chì tak ne?
- A. Uē-kwóh hai kóm a, Paak Sheûng-Wai tsaû iù tá tân-wâ* peí Cheung Sheûng-Sz là.

LANGUAGE LABORATORY PRACTICE UNIT 8

AURAL COMPREHENSION MATERIAL

Cheung Sheûng-Sz̄ : Tsó-shān, Leī Sheûng-Sz̄.

Leī Sheûng-Sz̄: Tsó-shān, Cheung Sheûng-Sz̄. Kam-yât kòm tsó faan-laī à! Ngõh seúng t'üng neī kóng keī kuì shuèt-wá, tak mà?

C: Hó à, ngõh chûng yaũ ti shī-haũ. Yaũ mat kwai-kòn à?

L: Mõ mi-yě sz̄. Ngõh kìn neī kam-yât mõ shai ch'e faan-laī; ngõh i-wai neī kà ch'e m-yüng-tak là. Ngõh seúng mân hã neī, seúng chi-tò neī tá m-tá-suèn maaī ch'e che.

C: Ngõh waák-ché ch'i hã chì maaī toh kà to wã m-tîng.

L: Ngõh chi-tò yaũ kà yat-kaú-sei-nǝ nìn kè ch'e, m-shai keī toh ts'in* tsaũ hõh-i maaī-tak-tò là. Uē-kwõh neī seúng maaī ch'e, ts'ing neī faai ti maaī. Ch'i hã ooi peī tai-i-kõh yãn maaī-chõh kà là.

C: Kòm hó à! Ngõh iù haaú-luī-hã chì hõh-i k'uèt-tîng pòh.

L: Hó à! Neī tsz̄-keī tá-suèn hã là! Neī t'üng ngõh ts'üng kwan i-king yaũ hó toh nìn là. Neī keī-tak mà? Kaũ-shī ngõh-teī hai haũ-pó kwan-koon hõk-haaũ pat ip chi haũ, neī t'üng ngõh to peī p'aaī huī Au-Chau; haũ-loī yaũ peī p'aaī huī A-Chau. Faan-laī Meī-Kwòk chi haũ, neī t'üng ngõh to hai yat-kaú-sei-lûk nìn ts'at-uêt tak-tó wîng-uê mìn chik. Kan-kuì ngõh shõh chi kè, chì tò i-ka neī chûng yûng-kán kà kaũ ch'e. Tím-tak kà! Neī iù chi-tò hai ni kòn shai-kaaī, kà ch'e hai pit-iù kè. Mõ kà hó ti kè ch'e hai hó m-fong-pîn kà.

C: Mõ-ts'òh. Neī kóng-tak tui. Táng ngõh faan huī t'üng T'aaī-T'aaī* kóng hã chì-tak kà. I-ka kau chung là. Ngõh iù tsaũ là.

L: Ts'ing neī siú-sam ti haaú-luī hã. Tsoi-kìn.

LANGUAGE LABORATORY PRACTICE UNIT 8

QUESTIONS AND ANSWERS

- Q. Cheung Sheûng-Sz kà ch'e hó m-hó à?
- A. K'uĩ kà ch'e m-haĩ keĩ hó.
- Q. Kóm, kam-yât k'uĩ yaũ mō shaĩ ch'e faan hôk à?
- A. Mō. Kam-yât k'uĩ mō shaĩ ch'e faan hôk.
- Q. K'uĩ kà ch'e m-haĩ keĩ hó. Kóm, k'uĩ seúng m-seúng maaĩ ch'e à?
- A. K'uĩ iù haaú-luĩ hã. K'uĩ chûng meĩ k'uêt-tîng.
- Q. Uē-kwóh k'uĩ seúng maaĩ kà kaũ ch'e, shaĩ m-shaĩ hó toh ts'in* chỉ maaĩ-tak tó kà?
- A: Uē-kwóh k'uĩ seúng maaĩ kaũ ch'e, m-shaĩ keĩ toh ts'in* tsaũ hóh-ĩ maaĩ-tak tó là.
- Q. Tui-ue maaĩ m-maaĩ ch'e ni kòh mán-t'ai, k'uĩ iù t'ûng pin-kòh kóng-hã chỉ tak à?
- A. Tui-ue ni kòh mán-t'ai, k'uĩ iù t'ûng k'uĩ kè t'aaĩ-t'aaĩ* kóng-hã chỉ tak.
- Q. Cheung Sheûng-Sz haĩ haũ-pó kwan-koon hôk-haaũ pat-íp chi-haũ, k'uĩ peĩ p'aaĩ huĩ pin shuè à?
- A. K'uĩ peĩ p'aaĩ huĩ Au-Chau.
- Q. Haũ-loĩ k'uĩ yaũ peĩ p'aaĩ huĩ pin shuè à?
- A. Haũ-loĩ k'uĩ yaũ peĩ p'aaĩ huĩ A-Chau.
- Q. Cheung Sheûng-Sz haĩ keĩ shĩ mĩn chik à?
- A. Cheung Sheûng-Sz haĩ yat-kaũ-seĩ-lûk nĩn ts'at-uêt wĩng-uê mĩn chik.

